

# \$1,500,000 - 4813 Donsdale Drive, Edmonton

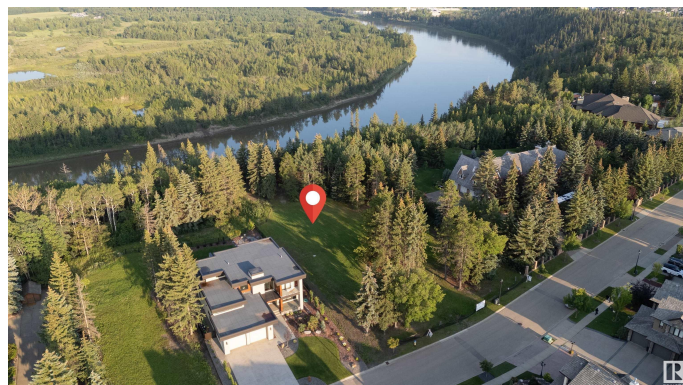
MLS® #E4431025

**\$1,500,000**

0 Bedroom, 0.00 Bathroom,  
Single Family on 0.00 Acres

Donsdale, Edmonton, AB

DREAM STREET! Build your legacy. Imagine the possibilities for a unique estate home on 73 foot frontage on Donsdale Drive. 12,825 SQ FT one four premier lots on the river's edge on Donsdale Drive. No time limit to build, choose your own builder. Some architectural controls apply. The lot will be fully serviced and ready to build. Visualize manicured grounds evocative gardens a sprawling estate that boasts privacy and serenity with spectacular views within the city limits. Mature trees tower over the property offering a park-like setting. Make it your ultimate achievement award...a family legacy. Endless possibilities for a great family estate Prestigious Donsdale Drive on the river is home to some of Edmonton's finest estate homes. Easy access to all amenities. SPECTACULAR!



## Essential Information

MLS® #	E4431025
Price	\$1,500,000
Bathrooms	0.00
Acres	0.00
Type	Single Family
Sub-Type	Vacant Lot/Land
Status	Active

## Community Information

Address	4813 Donsdale Drive
Area	Edmonton
Subdivision	Donsdale
City	Edmonton
County	ALBERTA
Province	AB
Postal Code	T6M 2N2

## Exterior

Exterior Features    Backs Onto Park/Trees, No Back Lane, Public Transportation, Ravine View, River Valley View, Schools, Shopping Nearby, Treed Lot

## Additional Information

Date Listed	April 15th, 2025
Days on Market	113
Zoning	Zone 20

DATA IS DEEMED RELIABLE BUT IS NOT GUARANTEED ACCURATE BY THE REALTORS® ASSOCIATION OF EDMONTON. COPYRIGHT 2025 BY THE REALTORS® ASSOCIATION OF EDMONTON. ALL RIGHTS RESERVED. Trademarks are owned or controlled by the Canadian Real Estate Association (CREA) and identify real estate professionals who are members of CREA (REALTOR®, REALTORS®) and/or the quality of services they provide (MLS®, Multiple Listing Service®)

Listing information last updated on August 5th, 2025 at 9:47pm MDT