

Courtesy Of Brent MacIntosh Of RE/MAX River City

\$189,900 - 101 10311 111 Street, Edmonton

MLS® #E4431325

\$189,900

2 Bedroom, 1.50 Bathroom, 842 sqft
Condo / Townhouse on 0.00 Acres

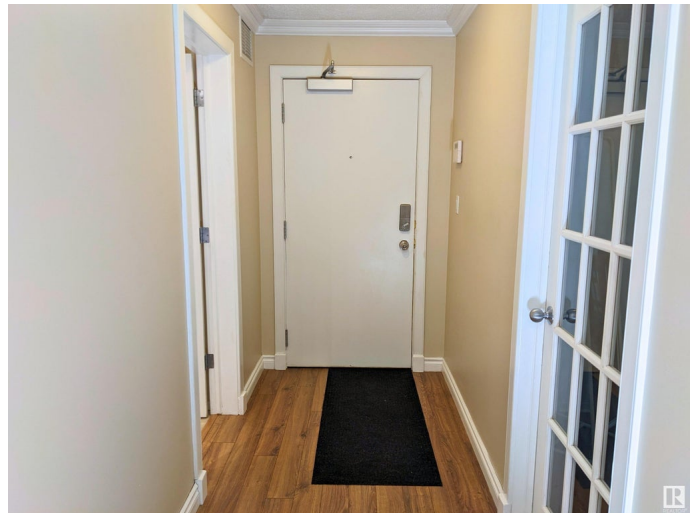
Downtown (Edmonton), Edmonton, AB

Why rent when you can own? With falling interest rates, MacEwan University's expansion, and a new LRT line coming, now's the perfect time to buy. This well-maintained 2 bed, 1.5 bath main-floor suite with front-facing patio is ideal for investors, first-time buyers, students, professionals, or seniors. The open-concept kitchen, dining, and living area is ready for your personal touch. The spacious primary bedroom features dual walk-through closets, a 4-piece ensuite, and a large window overlooking the patio. The second bedroom has no window—perfect for a guest room or home office. A 2-piece bath with enclosed laundry/storage, titled underground parking, and a 4x10 storage locker complete the unit. Enjoy downtown perks like great dining, short commutes, and vibrant culture—all in a quiet, park-surrounded setting. Don't miss out!

Built in 2003

Essential Information

MLS® #	E4431325
Price	\$189,900
Bedrooms	2
Bathrooms	1.50
Full Baths	1
Half Baths	1



Square Footage	842
Acres	0.00
Year Built	2003
Type	Condo / Townhouse
Sub-Type	Lowrise Apartment
Style	Single Level Apartment
Status	Active

Community Information

Address	101 10311 111 Street
Area	Edmonton
Subdivision	Downtown (Edmonton)
City	Edmonton
County	ALBERTA
Province	AB
Postal Code	T5K 2Y8

Amenities

Amenities	Exercise Room, Guest Suite, Intercom, Security Door, Social Rooms
Parking	Heated, Parkade, Underground

Interior

Interior Features	ensuite bathroom
Appliances	Dishwasher-Built-In, Dryer, Garage Opener, Garburator, Oven-Microwave, Refrigerator, Stove-Electric, Washer, Window Coverings
Heating	Baseboard, Hot Water, Natural Gas
# of Stories	5
Stories	1
Has Basement	Yes
Basement	None, No Basement

Exterior

Exterior	Wood, Brick, Vinyl
Exterior Features	Landscaped, Public Transportation, Schools, Shopping Nearby
Roof	Asphalt Shingles
Construction	Wood, Brick, Vinyl
Foundation	Concrete Perimeter

Additional Information

Date Listed	April 17th, 2025
Days on Market	122
Zoning	Zone 12
Condo Fee	\$521

DATA IS DEEMED RELIABLE BUT IS NOT GUARANTEED ACCURATE BY THE REALTORS® ASSOCIATION OF EDMONTON. COPYRIGHT 2025 BY THE REALTORS® ASSOCIATION OF EDMONTON. ALL RIGHTS RESERVED. Trademarks are owned or controlled by the Canadian Real Estate Association (CREA) and identify real estate professionals who are members of CREA (REALTOR®, REALTORS®) and/or the quality of services they provide (MLS®, Multiple Listing Service®)

Listing information last updated on August 17th, 2025 at 8:32pm MDT