

\$229,900 - 104 801 Bothwell Drive Drive, Sherwood Park

MLS® #E4432970

\$229,900

3 Bedroom, 1.50 Bathroom, 1,220 sqft
Condo / Townhouse on 0.00 Acres

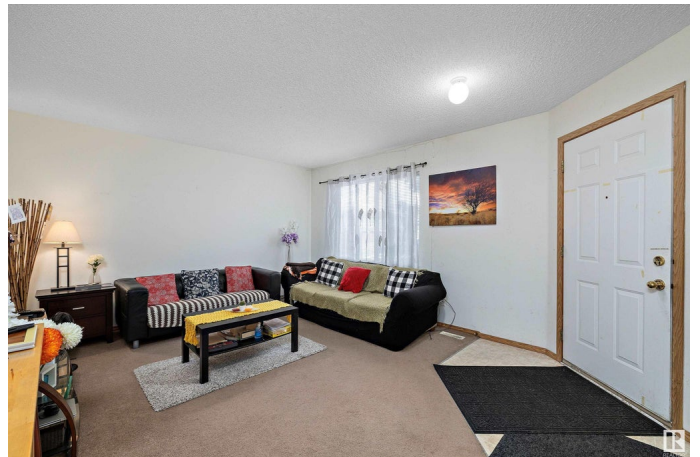
Strathcona Village, Sherwood Park, AB

3-BEDROOM TOWNHOUSE IN PRIME LOCATION – Great for First-Time Buyers or Investors! This 3-bedroom townhouse offers 1,220 sq. ft. of living space, featuring a large living room and a bright kitchen and dining area with patio doors leading to the backyard patio. Main floor laundry for added convenience. Upstairs, you’ll find three good-sized bedrooms, perfect for families or shared living. Conveniently located close to all amenities, walking distance to stores and restaurants, and just steps from public transit. Option to join a rental pool, with current tenants open to staying – making it a great investment with immediate rental income potential. Ideal for first-time buyers or anyone looking to expand their portfolio! whether you’re looking to settle in or expand your portfolio, this townhouse checks all the boxes!

Built in 2002

Essential Information

MLS® #	E4432970
Price	\$229,900
Bedrooms	3
Bathrooms	1.50
Full Baths	1
Half Baths	1
Square Footage	1,220



Acres	0.00
Year Built	2002
Type	Condo / Townhouse
Sub-Type	Townhouse
Style	2 Storey
Status	Active

Community Information

Address	104 801 Bothwell Drive Drive
Area	Sherwood Park
Subdivision	Strathcona Village
City	Sherwood Park
County	ALBERTA
Province	AB
Postal Code	T8H 2L1

Amenities

Amenities	No Animal Home, No Smoking Home
Parking	Stall

Interior

Appliances	Dishwasher-Built-In, Dryer, Refrigerator, Stove-Electric, Washer
Heating	Forced Air-1, Natural Gas
Stories	2
Has Basement	Yes
Basement	None, No Basement

Exterior

Exterior	Wood, Vinyl
Exterior Features	Playground Nearby, Public Transportation, Schools, Shopping Nearby
Roof	Asphalt Shingles
Construction	Wood, Vinyl
Foundation	Concrete Perimeter

Additional Information

Date Listed	April 25th, 2025
Days on Market	6
Zoning	Zone 25
Condo Fee	\$316

DATA IS DEEMED RELIABLE BUT IS NOT GUARANTEED ACCURATE BY THE REALTORS® ASSOCIATION OF EDMONTON. COPYRIGHT 2025 BY THE REALTORS® ASSOCIATION OF EDMONTON. ALL RIGHTS RESERVED.Trademarks are owned or controlled by the Canadian Real Estate Association (CREA) and identify real estate professionals who are members of CREA (REALTOR®, REALTORS®) and/or the quality of services they provide (MLS®, Multiple Listing Service®)

Listing information last updated on May 1st, 2025 at 1:47am MDT