

\$214,900 - 9620 110 Avenue, Edmonton

MLS® #E4433244

\$214,900

4 Bedroom, 2.00 Bathroom, 1,690 sqft
Single Family on 0.00 Acres

Mccauley, Edmonton, AB

Investor Alert Opportunity! This charming 2-storey home in Little Italy offers TWO fully legal suites—ideal for rental income or multi-generational living. The main floor features 833 sq.ft. with 2 bedrooms (or 1 bed + den), a 4-pc bath, kitchen, living room, dedicated laundry & a private deck. Upstairs, access the 848 sq.ft. LEGAL SUITE via exterior stairs to find 2 bedrooms, a 4-pc bath, living room, in-suite laundry & another private deck. Easy-care laminate/vinyl plank flooring throughout & efficient hot water heating. This property is brimming with potential—requires cosmetic updates to boost value! Whether you're looking to live in one suite & rent the other, or renovate and maximize rental returns, the central location is unbeatable—steps to Royal Alex Hospital, Kingsway Mall, Commonwealth, Downtown & transit. Not your average cookie-cutter home—this one—™s full of charm, flexibility & opportunity!

Built in 1933

Essential Information

| | |
|------------|-----------|
| MLS® # | E4433244 |
| Price | \$214,900 |
| Bedrooms | 4 |
| Bathrooms | 2.00 |
| Full Baths | 2 |



| | |
|----------------|------------------------|
| Square Footage | 1,690 |
| Acres | 0.00 |
| Year Built | 1933 |
| Type | Single Family |
| Sub-Type | Detached Single Family |
| Style | 2 Storey |
| Status | Active |

Community Information

| | |
|-------------|-----------------|
| Address | 9620 110 Avenue |
| Area | Edmonton |
| Subdivision | Mccauley |
| City | Edmonton |
| County | ALBERTA |
| Province | AB |
| Postal Code | T5H 1H5 |

Amenities

| | |
|----------------|------------------------|
| Amenities | Deck, Vinyl Windows |
| Parking Spaces | 2 |
| Parking | Single Garage Detached |

Interior

| | |
|--------------|------------------------|
| Appliances | See Remarks |
| Heating | Baseboard, Natural Gas |
| Stories | 2 |
| Has Suite | Yes |
| Has Basement | Yes |
| Basement | Full, Unfinished |

Exterior

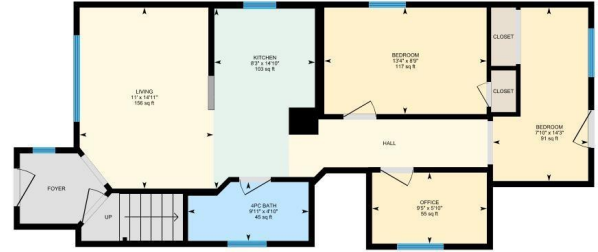
| | |
|-------------------|---|
| Exterior | Wood, Vinyl |
| Exterior Features | Back Lane, Flat Site, Landscaped, Playground Nearby, Public Transportation, Schools |
| Roof | Asphalt Shingles |
| Construction | Wood, Vinyl |
| Foundation | Concrete Perimeter |

Additional Information

Date Listed April 29th, 2025
Days on Market 2
Zoning Zone 13

9620 110 Ave NW, Edmonton, AB

Main Floor Exterior Area 832.57 sq ft
Interior Area 759.72 sq ft



DATA IS DEEMED RELIABLE BUT IS NOT GUARANTEED ACCURATE BY THE REALTORS® ASSOCIATION OF EDMONTON. COPYRIGHT 2025 BY THE REALTORS® ASSOCIATION OF EDMONTON. ALL RIGHTS RESERVED. Trademarks are owned or controlled by the Canadian Real Estate Association (CREA) and identify real estate professionals who are members of CREA (REALTOR®, REALTORS®) and/or the quality of services they provide (MLS®, Multiple Listing Service®)
Listing information last updated on May 1st, 2025 at 2:02am MDT