

\$624,707 - 224 Newcastle Crescent, Sherwood Park

MLS® #E4433459

\$624,707

4 Bedroom, 2.50 Bathroom, 1,303 sqft

Single Family on 0.00 Acres

Nottingham, Sherwood Park, AB

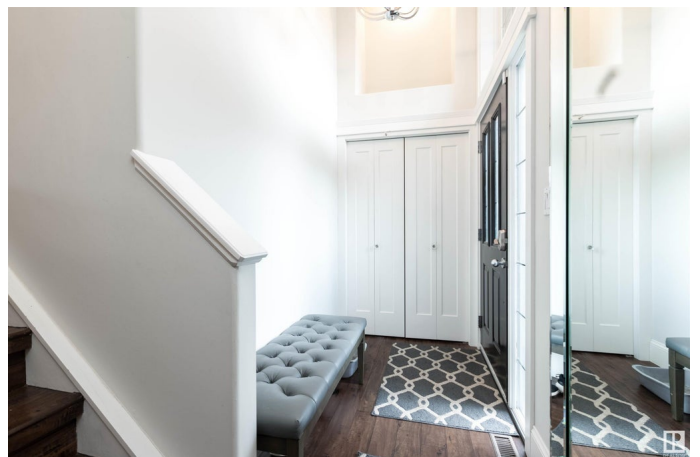
WOW! Fall in love with this beautifully renovated home located in the prestigious community of Nottingham. This beauty offers an amazing open design with vaulted ceilings on the main and over 2166 square feet of total living space! Featuring a DREAM KITCHEN with gorgeous Quartz counter tops, beautiful cabinetry, stainless steel appliances, corner pantry, a huge island and a large dining area. Spacious and bright living room with large windows and gas fireplace. There are a total of 4 bedrooms and 3 bathrooms. Upper level with Primary Bedroom, walk-in closet and beautiful 4 piece ensuite with heated floors. The basement boasts a large family room plus games area/flex space, 4th bedroom, 3 piece bathroom, laundry and utility room. NEW FURNACE and central A/C. You will love the PARK-LIKE BACKYARD! New deck as well! Fabulous location, close to parks, trails, schools, transit and shopping. This is a great home for entertaining and enjoying family living! Visit REALTOR® website for more information.

Built in 2003

Essential Information

MLS® # E4433459

Price \$624,707



Bedrooms	4
Bathrooms	2.50
Full Baths	2
Half Baths	1
Square Footage	1,303
Acres	0.00
Year Built	2003
Type	Single Family
Sub-Type	Detached Single Family
Style	Bi-Level
Status	Active

Community Information

Address	224 Newcastle Crescent
Area	Sherwood Park
Subdivision	Nottingham
City	Sherwood Park
County	ALBERTA
Province	AB
Postal Code	T8A 6K8

Amenities

Amenities	Air Conditioner, Deck
Parking	Double Garage Attached

Interior

Interior Features	ensuite bathroom
Appliances	Air Conditioning-Central, Dishwasher-Built-In, Dryer, Garage Control, Garage Opener, Hood Fan, Stove-Electric, Washer, Window Coverings, Refrigerators-Two, TV Wall Mount, Garage Heater
Heating	Forced Air-1, Natural Gas
Stories	2
Has Basement	Yes
Basement	Full, Finished

Exterior

Exterior	Wood, Brick, Vinyl
Exterior Features	Fenced, No Back Lane, Public Transportation, Schools, Shopping Nearby

Roof	Cedar Shakes
Construction	Wood, Brick, Vinyl
Foundation	Concrete Perimeter

Additional Information

Date Listed	April 30th, 2025
Days on Market	1
Zoning	Zone 25

DATA IS DEEMED RELIABLE BUT IS NOT GUARANTEED ACCURATE BY THE REALTORS® ASSOCIATION OF EDMONTON. COPYRIGHT 2025 BY THE REALTORS® ASSOCIATION OF EDMONTON. ALL RIGHTS RESERVED.Trademarks are owned or controlled by the Canadian Real Estate Association (CREA) and identify real estate professionals who are members of CREA (REALTOR®, REALTORS®) and/or the quality of services they provide (MLS®, Multiple Listing Service®)

Listing information last updated on May 1st, 2025 at 9:47am MDT