

\$889,555 - 5703 Edworthy Landing, Edmonton

MLS® #E4433712

\$889,555

4 Bedroom, 2.50 Bathroom, 2,651 sqft

Single Family on 0.00 Acres

Edgemont (Edmonton), Edmonton, AB

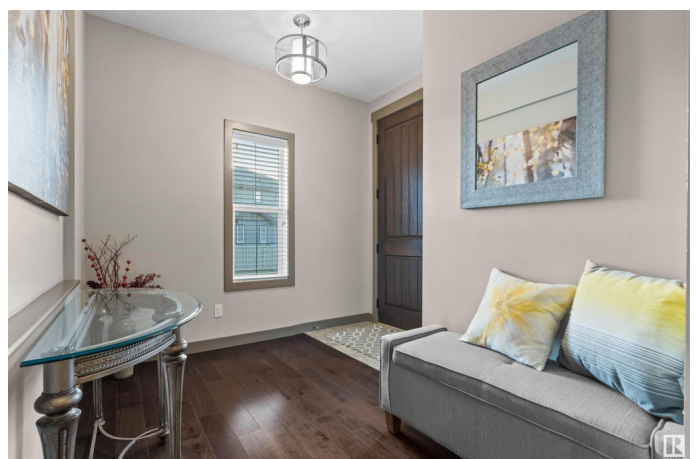
Prestigious Ravine-Backing Corner Lot Estate w/South facing yard! Nestled in Woodhaven Edgemont community, this custom-built masterpiece offers the perfect blend of elegance & functionality. Offering 4 spacious bedrooms + a bonus room upstairs, a triple heated garage, & central A/C, this home is designed for refined living. The grand main floor welcomes you w/a sophisticated den/office, a formal dining room featuring a stylish buffet bar, & a gourmet chef's kitchen equipped w/ premium s/s appliances, a gas range, & a sprawling island w/custom cabinetry. The sunlit great room, centered around a chic gas fireplace, effortlessly opens to your private, south-facing backyard retreat—fully fenced & backing onto the tranquil Wedgewood Creek Ravine. Upstairs, the lavish primary suite impresses w/a spa-like ensuite + expansive walk-in closet, while 3 additional generously sized bedrooms & a versatile bonus room provide ample space for family/guests. Customize the partially finished lower level to perfection!

Built in 2015

Essential Information

MLS® # E4433712

Price \$889,555



Bedrooms	4
Bathrooms	2.50
Full Baths	2
Half Baths	1
Square Footage	2,651
Acres	0.00
Year Built	2015
Type	Single Family
Sub-Type	Detached Single Family
Style	2 Storey
Status	Active

Community Information

Address	5703 Edworthy Landing
Area	Edmonton
Subdivision	Edgemont (Edmonton)
City	Edmonton
County	ALBERTA
Province	AB
Postal Code	T6M 0P2

Amenities

Amenities	Air Conditioner, Ceiling 9 ft., Deck, Detectors Smoke, No Smoking Home, Parking-Extra, Parking-Plug-Ins, R.V. Storage, Storage-In-Suite, 9 ft. Basement Ceiling
Parking Spaces	6
Parking	Over Sized, RV Parking, Triple Garage Attached

Interior

Interior Features	ensuite bathroom
Appliances	Air Conditioning-Central, Dishwasher-Built-In, Dryer, Garage Control, Garage Opener, Refrigerator, Stove-Gas
Heating	Forced Air-1, Natural Gas
Fireplace	Yes
Fireplaces	Brick Facing
Stories	2
Has Basement	Yes
Basement	Full, Partially Finished

Exterior

Exterior	Wood, Stone, Vinyl
Exterior Features	Backs Onto Park/Trees, Cul-De-Sac, Fenced, Golf Nearby, Landscaped, Park/Reserve, Playground Nearby, Public Transportation, Ravine View, Schools, Shopping Nearby, See Remarks
Roof	Asphalt Shingles
Construction	Wood, Stone, Vinyl
Foundation	Concrete Perimeter

Additional Information

Date Listed	May 1st, 2025
Days on Market	46
Zoning	Zone 57
HOA Fees	85
HOA Fees Freq.	Annually

DATA IS DEEMED RELIABLE BUT IS NOT GUARANTEED ACCURATE BY THE REALTORS® ASSOCIATION OF EDMONTON. COPYRIGHT 2025 BY THE REALTORS® ASSOCIATION OF EDMONTON. ALL RIGHTS RESERVED.Trademarks are owned or controlled by the Canadian Real Estate Association (CREA) and identify real estate professionals who are members of CREA (REALTOR®, REALTORS®) and/or the quality of services they provide (MLS®, Multiple Listing Service®)

Listing information last updated on June 16th, 2025 at 6:32pm MDT