

## \$559,900 - 15 Melrose Crescent, Sherwood Park

MLS® #E4434510

**\$559,900**

4 Bedroom, 2.50 Bathroom, 1,821 sqft

Single Family on 0.00 Acres

Mills Haven, Sherwood Park, AB

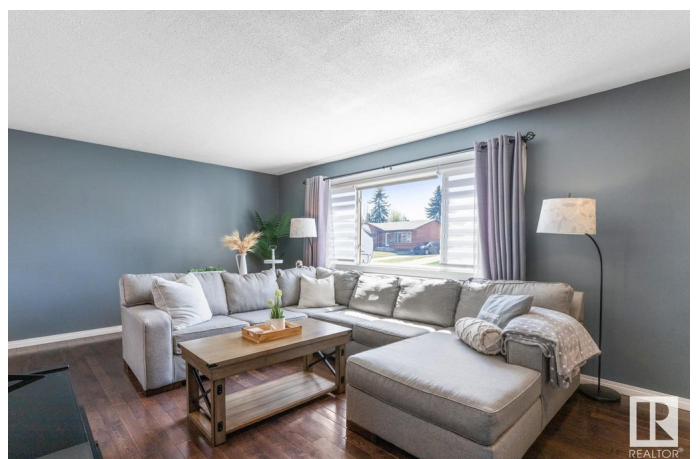
Look no further than this beautifully UPDATED home, tucked on to a quiet street in the desirable neighbourhood of Mills Haven, featuring OVERSIZED 29x24 HEATED garage, 4 bedrooms & 2.5 baths. You are welcomed in to find a spacious entry that opens to a family sized living room with newer picture window complete with solar sun shade. Hardwood flooring leads to the kitchen the offers plenty of cabinets, pantry & island that looks over the dining area. Awesome mud room complements the functional main level. Upstairs you will find a king sized primary suite with WI closet, ensuite with jacuzzi tub plus access to the private patio. 3 more bedrooms are generous in size & 4pc UPDATED bath complete the upper levels. Moving down to the lower level, you will LOVE the rec room with cozy fireplace, bathroom & tons of storage. NEW ROOF (2024), NEWER WINDOWS & HE FURNACE. Enjoy the fenced & landscaped yard with entertaining sized deck with hot tub, surrounded my mature trees, all steps away from schools & parks.

Built in 1975

### Essential Information

MLS® # E4434510

Price \$559,900



Bedrooms	4
Bathrooms	2.50
Full Baths	2
Half Baths	1
Square Footage	1,821
Acres	0.00
Year Built	1975
Type	Single Family
Sub-Type	Detached Single Family
Style	4 Level Split
Status	Active

### Community Information

Address	15 Melrose Crescent
Area	Sherwood Park
Subdivision	Mills Haven
City	Sherwood Park
County	ALBERTA
Province	AB
Postal Code	T8A 3T9

### Amenities

Amenities	Deck, Hot Tub, Vinyl Windows, See Remarks
Parking	Double Garage Detached, Heated, Over Sized

### Interior

Interior Features	ensuite bathroom
Appliances	Dishwasher-Built-In, Garage Opener, Garburator, Microwave Hood Fan, Refrigerator, Storage Shed, Stove-Electric, Window Coverings, Garage Heater, Hot Tub
Heating	Forced Air-1, Natural Gas
Fireplace	Yes
Fireplaces	Wall Mount
Stories	4
Has Basement	Yes
Basement	Full, Finished

### Exterior

Exterior	Wood, Vinyl
----------	-------------

Exterior Features	Fenced, Landscaped, Playground Nearby, Private Setting, Public Transportation, Schools, Shopping Nearby, See Remarks
Roof	Asphalt Shingles
Construction	Wood, Vinyl
Foundation	Concrete Perimeter

### **School Information**

Elementary	MILLS HAVEN
Middle	CLOVER BAR JR
High	SALISBURY COMP

### **Additional Information**

Date Listed	May 5th, 2025
Days on Market	11
Zoning	Zone 25

DATA IS DEEMED RELIABLE BUT IS NOT GUARANTEED ACCURATE BY THE REALTORS® ASSOCIATION OF EDMONTON. COPYRIGHT 2025 BY THE REALTORS® ASSOCIATION OF EDMONTON. ALL RIGHTS RESERVED. Trademarks are owned or controlled by the Canadian Real Estate Association (CREA) and identify real estate professionals who are members of CREA (REALTOR®, REALTORS®) and/or the quality of services they provide (MLS®, Multiple Listing Service®)

Listing information last updated on May 15th, 2025 at 10:17pm MDT