

\$587,895 - 408 27 Street, Edmonton

MLS® #E4434616

\$587,895

4 Bedroom, 3.00 Bathroom, 1,887 sqft
Single Family on 0.00 Acres

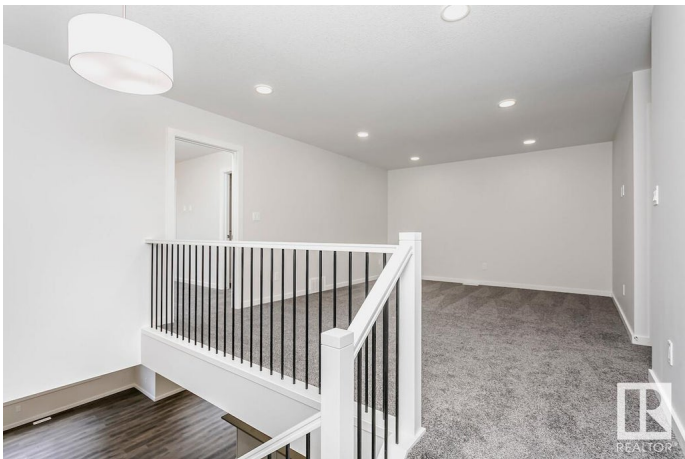
Alces, Edmonton, AB

The Stella is a spacious single family home with double front attached garage home, 9' ceilings on the main floor bedroom and full bathroom featuring a stand-up shower with tiled walls for your short/long term visitor's convenience. The kitchen overlooks the great room with a 50" linear fireplace, dining area, and features quartz counters with extensive cabinet space. Spacious walk-through pantry which leads to the mudroom. A side entrance is included for future development. Basement ceiling height upgraded to 9', for a more spacious feel, and 3-piece rough-in for future bathroom. Metal spindle railing on the main and second floor. The primary ensuite has dual sinks in the vanity and a 5' stand up shower with tiled walls. Upstairs you will find a central bonus room, 3 bedrooms, laundry, and linen closet. Photos are representative.

Built in 2025

Essential Information

MLS® #	E4434616
Price	\$587,895
Bedrooms	4
Bathrooms	3.00
Full Baths	3
Square Footage	1,887



Acres	0.00
Year Built	2025
Type	Single Family
Sub-Type	Detached Single Family
Style	2 Storey
Status	Active

Community Information

Address	408 27 Street
Area	Edmonton
Subdivision	Alces
City	Edmonton
County	ALBERTA
Province	AB
Postal Code	T6X 3H9

Amenities

Amenities	Closet Organizers, See Remarks
Parking Spaces	4
Parking	Double Garage Attached

Interior

Interior Features	ensuite bathroom
Appliances	None
Heating	Forced Air-1, Natural Gas
Fireplace	Yes
Fireplaces	Insert
Stories	2
Has Basement	Yes
Basement	Full, Unfinished

Exterior

Exterior	Wood, Vinyl
Exterior Features	Park/Reserve, Playground Nearby, Shopping Nearby
Roof	Asphalt Shingles
Construction	Wood, Vinyl
Foundation	Concrete Perimeter

Additional Information

Date Listed May 5th, 2025

Days on Market 43

Zoning Zone 53

DATA IS DEEMED RELIABLE BUT IS NOT GUARANTEED ACCURATE BY THE REALTORS® ASSOCIATION OF EDMONTON. COPYRIGHT 2025 BY THE REALTORS® ASSOCIATION OF EDMONTON. ALL RIGHTS RESERVED. Trademarks are owned or controlled by the Canadian Real Estate Association (CREA) and identify real estate professionals who are members of CREA (REALTOR®, REALTORS®) and/or the quality of services they provide (MLS®, Multiple Listing Service®)

Listing information last updated on June 17th, 2025 at 9:17am MDT