

\$244,900 - 101 10611 84 Avenue, Edmonton

MLS® #E4438935

\$244,900

2 Bedroom, 2.00 Bathroom, 1,086 sqft
Condo / Townhouse on 0.00 Acres

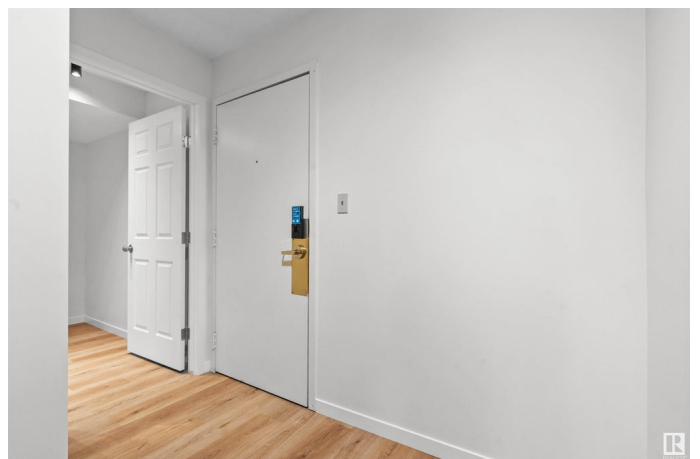
Strathcona, Edmonton, AB

Welcome home! Spacious 1086 sq.ft. 2, bedroom, 2 bathroom + den, with underground parking in the heart of Strathcona. Unbeatable location close to Whyte avenue, U of A, parks, schools and downtown! Completely renovated and move-in ready, this main floor unit has an open and bright floor plan, with new vinyl flooring, new paint and numerous other upgrades. The kitchen and bathrooms have new cabinetry and counters, with new stainless steel appliances in the kitchen. The dining area blends seamlessly with the kitchen and dining areas, with a solarium style window bringing in great natural light. The living room is spacious and inviting with a wood-burning fireplace and easy access out to the balcony area that overlooks the front yard. The bedrooms of the unit are all a great size, with the primary suite that includes a 3-piece ensuite. There is another full 4-piece bathroom with a tiled shower, a flex-space den, and insuite laundry to complete the package. Great location, nicely renovated and move in ready!

Built in 1981

Essential Information

MLS® #	E4438935
Price	\$244,900
Bedrooms	2



Bathrooms	2.00
Full Baths	2
Square Footage	1,086
Acres	0.00
Year Built	1981
Type	Condo / Townhouse
Sub-Type	Lowrise Apartment
Style	Single Level Apartment
Status	Active

Community Information

Address	101 10611 84 Avenue
Area	Edmonton
Subdivision	Strathcona
City	Edmonton
County	ALBERTA
Province	AB
Postal Code	T6E 2H7

Amenities

Amenities	Detectors Smoke, No Smoking Home, Parking-Visitor, Patio, See Remarks
Parking	Heated, Underground, See Remarks

Interior

Interior Features	ensuite bathroom
Appliances	Dishwasher-Built-In, Dryer, Garage Opener, Garburator, Microwave Hood Fan, Refrigerator, Stove-Electric, Washer, See Remarks
Heating	Hot Water, Natural Gas
Fireplace	Yes
Fireplaces	Brick Facing, Corner, Mantel
# of Stories	3
Stories	1
Has Basement	Yes
Basement	None, No Basement

Exterior

Exterior	Wood
Exterior Features	Back Lane, Fenced, Flat Site, Fruit Trees/Shrubs, Golf Nearby,

Landscaped, Low Maintenance Landscape, Park/Reserve, Playground
Nearby, Public Swimming Pool, Public Transportation, Schools,
Shopping Nearby, Treed Lot, See Remarks

Roof	Asphalt Shingles
Construction	Wood
Foundation	Concrete Perimeter

School Information

Elementary	Garneau School
Middle	Donnan School
High	Strathcona School

Additional Information

Date Listed	May 28th, 2025
Days on Market	20
Zoning	Zone 15
Condo Fee	\$668

DATA IS DEEMED RELIABLE BUT IS NOT GUARANTEED ACCURATE BY THE REALTORS® ASSOCIATION OF EDMONTON. COPYRIGHT 2025 BY THE REALTORS® ASSOCIATION OF EDMONTON. ALL RIGHTS RESERVED. Trademarks are owned or controlled by the Canadian Real Estate Association (CREA) and identify real estate professionals who are members of CREA (REALTOR®, REALTORS®) and/or the quality of services they provide (MLS®, Multiple Listing Service®)

Listing information last updated on June 17th, 2025 at 9:02am MDT