

# \$1,998,800 - 54 Windermere Drive, Edmonton

MLS® #E4441388

**\$1,998,800**

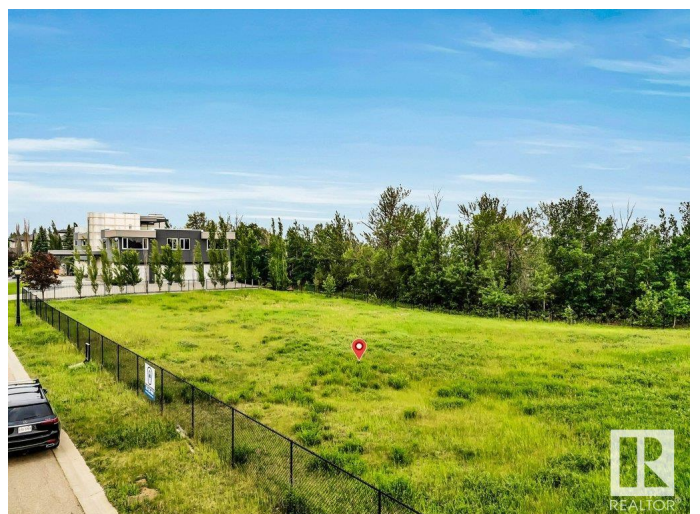
0 Bedroom, 0.00 Bathroom,  
Single Family on 0.00 Acres

Windermere, Edmonton, AB

Welcome to Windermere! Welcome to an extraordinary opportunity to own a vacant lot in one of Edmonton's most coveted communities – Windermere Ridge. This expansive 0.61-acre (over 2,468 square meters) parcel of land is situated in a premier location, offering the perfect canvas to build your luxury dream home. Nestled in a serene & private setting, the lot backs onto a lush treed area w/ breathtaking green space views, creating a peaceful natural retreat right in your backyard. Enjoy the scenic beauty of the North Saskatchewan River & the prestigious River Ridge Golf and Country Club, just a stone's throw away. This location is truly a golfer's and nature lover's paradise. Located in one of the finest neighbourhoods in Edmonton, Windermere Ridge is renowned for its exclusivity, upscale homes & unparalleled lifestyle. This lot not only offers privacy & tranquility, but also easy access to top-tier amenities, shopping, fine dining, top-rated schools, & major roadways!

## Essential Information

MLS® #	E4441388
Price	\$1,998,800
Bathrooms	0.00
Acres	0.00



Type	Single Family
Sub-Type	Vacant Lot/Land
Status	Active

### Community Information

Address	54 Windermere Drive
Area	Edmonton
Subdivision	Windermere
City	Edmonton
County	ALBERTA
Province	AB
Postal Code	T6W 0S1

### Exterior

Exterior Features	Airport Nearby, Backs Onto Park/Trees, Fenced, Flat Site, Fruit Trees/Shrubs, Golf Nearby, Park/Reserve, Public Transportation, Ravine View, Schools, Shopping Nearby, See Remarks
Lot Description	0.61 Acr

### School Information

Elementary	Const. Daniel Woodall
Middle	Riverbend School
High	Lilian Osborne School

### Additional Information

Date Listed	June 9th, 2025
Days on Market	70
Zoning	Zone 56

DATA IS DEEMED RELIABLE BUT IS NOT GUARANTEED ACCURATE BY THE REALTORS® ASSOCIATION OF EDMONTON. COPYRIGHT 2025 BY THE REALTORS® ASSOCIATION OF EDMONTON. ALL RIGHTS RESERVED. Trademarks are owned or controlled by the Canadian Real Estate Association (CREA) and identify real estate professionals who are members of CREA (REALTOR®, REALTORS®) and/or the quality of services they provide (MLS®, Multiple Listing Service®)

Listing information last updated on August 18th, 2025 at 7:47pm MDT