

\$600,000 - 3655 28 Street, Edmonton

MLS® #E4444784

\$600,000

4 Bedroom, 3.50 Bathroom, 1,776 sqft

Single Family on 0.00 Acres

Wild Rose, Edmonton, AB

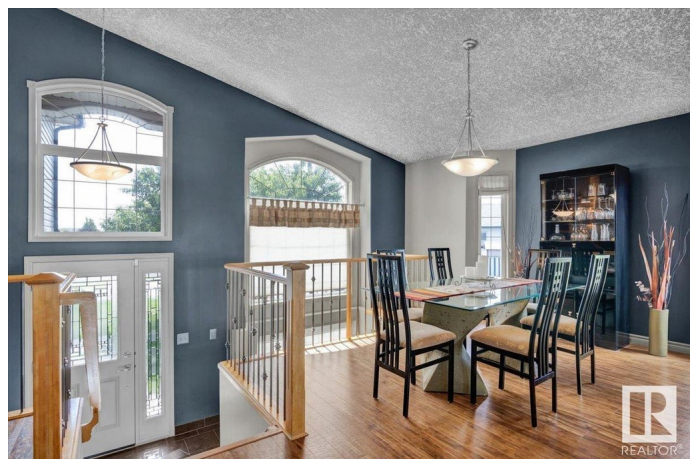
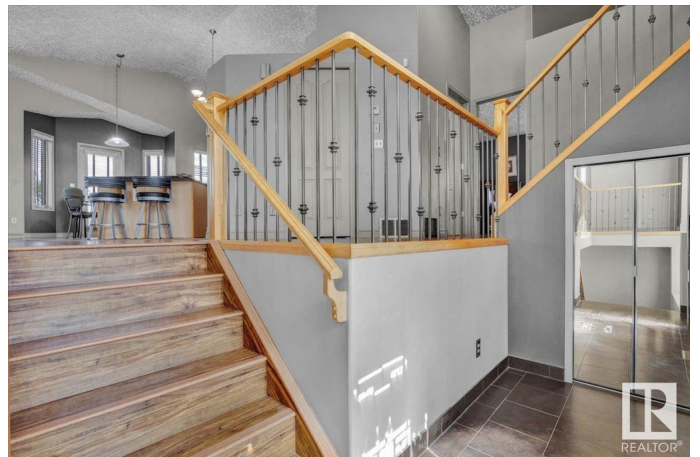
CUSTOM HOME ON A LARGE CORNER LOT W/ A RARE TRIPLE ATTACHED GARAGE. Step inside & be greeted by soaring vaulted ceilings & an abundance of natural light streaming through large windows. The open-concept layout is ideal for entertaining & growing families. The kitchen has loads of cabinetry, granite countertops, a large island, corner pantry, & some newer appliances. The main floor includes a roomy primary bedroom w/ a 4-piece ensuite & dedicated makeup vanity. Upstairs, you'll find 2 large bedrooms & another full 4-piece bathroom. The fully finished basement offers even more living space w/ a large rec room, den, bedroom, & a full bathroom- perfect for guests or older kids. Outside is an entertainer's paradise w/ only one neighbour! Enjoy a low-maintenance deck, brick patio, & beautifully maintained landscaping, complete w/ underground sprinklers. Other features include HWT (2019), new laminate & ceramic tile flooring, Sump Pump (2020), Shingles (2020), A/C (2012) & MORE! Furnace room shelving included.

Built in 2000

Essential Information

MLS® # E4444784

Price \$600,000



Bedrooms	4
Bathrooms	3.50
Full Baths	3
Half Baths	1
Square Footage	1,776
Acres	0.00
Year Built	2000
Type	Single Family
Sub-Type	Detached Single Family
Style	Bi-Level
Status	Active

Community Information

Address	3655 28 Street
Area	Edmonton
Subdivision	Wild Rose
City	Edmonton
County	ALBERTA
Province	AB
Postal Code	T6T 1N4

Amenities

Amenities	Air Conditioner, Ceiling 9 ft., Hot Water Natural Gas, No Smoking Home, Smart/Program. Thermostat, Sprinkler Sys-Underground, Vaulted Ceiling, Vinyl Windows
Parking	Insulated, Triple Garage Attached

Interior

Interior Features	ensuite bathroom
Appliances	Dishwasher-Built-In, Dryer, Oven-Microwave, Refrigerator, Stove-Electric, Washer, Window Coverings
Heating	Forced Air-1, Natural Gas
Fireplace	Yes
Fireplaces	Mantel
Stories	3
Has Basement	Yes
Basement	Full, Finished

Exterior

Exterior	Wood, Vinyl
Exterior Features	Corner Lot, Cul-De-Sac, Fenced, Landscaped, Playground Nearby, Public Transportation, Schools, Shopping Nearby
Roof	Asphalt Shingles
Construction	Wood, Vinyl
Foundation	Concrete Perimeter

School Information

Elementary	Velma E./Mary Hanley
Middle	Thelma C/Father Michael
High	Elder Dr. F/Austin O'Brien

Additional Information

Date Listed	June 27th, 2025
Days on Market	10
Zoning	Zone 30

DATA IS DEEMED RELIABLE BUT IS NOT GUARANTEED ACCURATE BY THE REALTORS® ASSOCIATION OF EDMONTON. COPYRIGHT 2025 BY THE REALTORS® ASSOCIATION OF EDMONTON. ALL RIGHTS RESERVED. Trademarks are owned or controlled by the Canadian Real Estate Association (CREA) and identify real estate professionals who are members of CREA (REALTOR®, REALTORS®) and/or the quality of services they provide (MLS®, Multiple Listing Service®)

Listing information last updated on July 7th, 2025 at 2:18pm MDT