

\$349,000 - 10355 Whyte Ave, Edmonton

MLS® #E4444792

\$349,000

0 Bedroom, 0.00 Bathroom,
Business on 0.00 Acres

Strathcona, Edmonton, AB

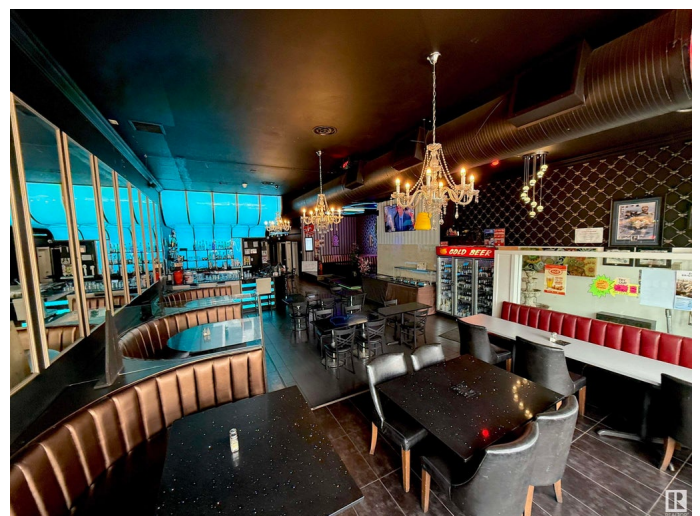
Operating for over 20 years with a strong reputation and loyal customer base Located near Whyte Avenue, one of Edmontons busiest and most vibrant areas known for its nightlife, festivals, restaurants, and constant foot traffic Business hours: 11 AM to 2 AM, catering to both daytime and late-night customers. Approximately 50% dine-in and 50% takeout/delivery 7 employees (mix of full-time and part-time). Daily specials and strong word-of-mouth within the local community. Fully employee-run suitable for an investor or semi-absentee owner. All furniture, fixtures, equipment, and inventory included in the offering. NDA Required for financials and other details.

Essential Information

MLS® #	E4444792
Price	\$349,000
Bathrooms	0.00
Acres	0.00
Type	Business
Status	Active

Community Information

Address	10355 Whyte Ave
Area	Edmonton



Subdivision	Strathcona
City	Edmonton
County	ALBERTA
Province	AB
Postal Code	T6T 1Z9

Additional Information

Date Listed	June 27th, 2025
Days on Market	22
Zoning	Zone 15

DATA IS DEEMED RELIABLE BUT IS NOT GUARANTEED ACCURATE BY THE REALTORS® ASSOCIATION OF EDMONTON. COPYRIGHT 2025 BY THE REALTORS® ASSOCIATION OF EDMONTON. ALL RIGHTS RESERVED. Trademarks are owned or controlled by the Canadian Real Estate Association (CREA) and identify real estate professionals who are members of CREA (REALTOR®, REALTORS®) and/or the quality of services they provide (MLS®, Multiple Listing Service®)

Listing information last updated on July 19th, 2025 at 1:47pm MDT