

\$279,900 - 5 14603 Miller Boulevard, Edmonton

MLS® #E4445114

\$279,900

3 Bedroom, 1.50 Bathroom, 1,228 sqft
Condo / Townhouse on 0.00 Acres

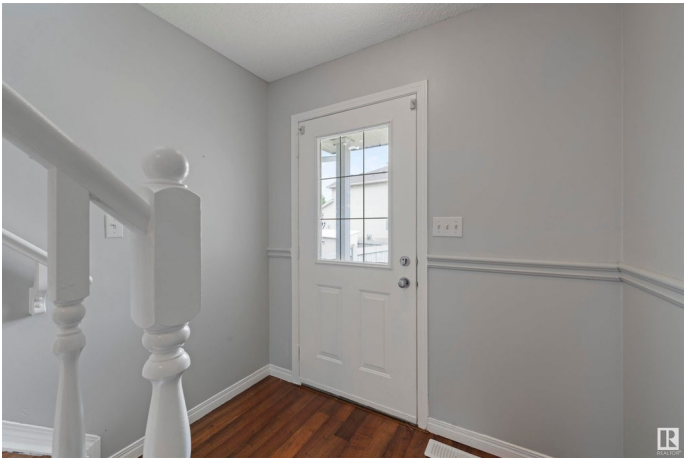
Miller, Edmonton, AB

Welcome to Summerhill Park in the vibrant Community of Miller! This charming 3-bedroom, 1.5-bath half duplex condo is perfect for first-time home buyers or investors. With LOW condo fees, this home offers great value. Enjoy an open-concept layout on the main floor that seamlessly connects the kitchen, dining, and living areas—ideal for entertaining or family time. The property includes a single attached garage, a fenced backyard, and a deck for outdoor enjoyment. The undeveloped basement offers potential to create additional living space. Conveniently located near schools, the Anthony Henday, and Manning Town Centre—with Cineplex, Cabela’s™s, Winners, and numerous restaurants. Plus, it’s™s within walking distance to the Clareview LRT Station and Clareview Recreation Centre. A fantastic opportunity in a well-connected neighbourhood!

Built in 2002

Essential Information

| | |
|------------|-----------|
| MLS® # | E4445114 |
| Price | \$279,900 |
| Bedrooms | 3 |
| Bathrooms | 1.50 |
| Full Baths | 1 |



| | |
|----------------|-------------------|
| Half Baths | 1 |
| Square Footage | 1,228 |
| Acres | 0.00 |
| Year Built | 2002 |
| Type | Condo / Townhouse |
| Sub-Type | Half Duplex |
| Style | 2 Storey |
| Status | Active |

Community Information

| | |
|-------------|--------------------------|
| Address | 5 14603 Miller Boulevard |
| Area | Edmonton |
| Subdivision | Miller |
| City | Edmonton |
| County | ALBERTA |
| Province | AB |
| Postal Code | T5Y 3B6 |

Amenities

| | |
|----------------|------------------------|
| Amenities | See Remarks |
| Parking Spaces | 2 |
| Parking | Single Garage Attached |

Interior

| | |
|--------------|--|
| Appliances | Dishwasher-Built-In, Dryer, Refrigerator, Stove-Electric, Washer |
| Heating | Forced Air-1, Natural Gas |
| Stories | 2 |
| Has Basement | Yes |
| Basement | Full, Unfinished |

Exterior

| | |
|-------------------|--|
| Exterior | Wood, Vinyl |
| Exterior Features | Fenced, Flat Site, Low Maintenance Landscape, Public Transportation, Shopping Nearby |
| Roof | Asphalt Shingles |
| Construction | Wood, Vinyl |
| Foundation | Concrete Perimeter |

School Information

| | |
|------------|-----------------------|
| Elementary | McLeod School |
| Middle | Steele Heights School |
| High | M.E. LaZerte |

Additional Information

| | |
|----------------|-----------------|
| Date Listed | June 30th, 2025 |
| Days on Market | 1 |
| Zoning | Zone 02 |
| Condo Fee | \$179 |

DATA IS DEEMED RELIABLE BUT IS NOT GUARANTEED ACCURATE BY THE REALTORS® ASSOCIATION OF EDMONTON. COPYRIGHT 2025 BY THE REALTORS® ASSOCIATION OF EDMONTON. ALL RIGHTS RESERVED.Trademarks are owned or controlled by the Canadian Real Estate Association (CREA) and identify real estate professionals who are members of CREA (REALTOR®, REALTORS®) and/or the quality of services they provide (MLS®, Multiple Listing Service®)

Listing information last updated on July 1st, 2025 at 4:47am MDT