

# \$299,800 - 1096 Millbourne, Edmonton

MLS® #E4445319

**\$299,800**

4 Bedroom, 1.50 Bathroom, 1,055 sqft  
Condo / Townhouse on 0.00 Acres

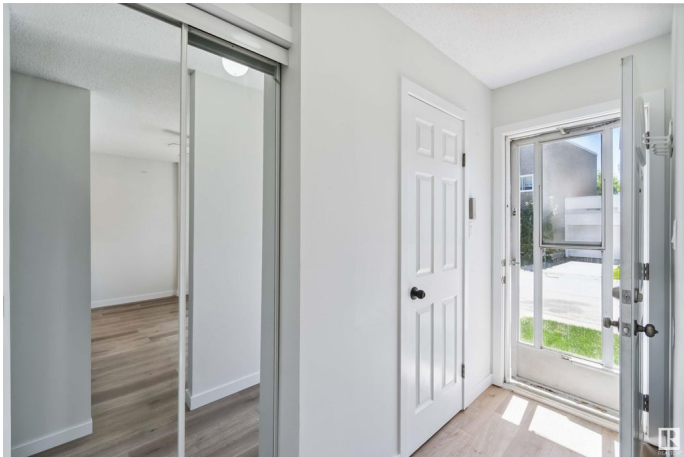
Michaels Park, Edmonton, AB

Fully renovated, move-in-ready south-facing townhouse blending modern chic with comfort! Enjoy a bright, stylish living room with ample windows. The light-filled kitchen and dining area open to a low-maintenance, fully fenced yardâ€”perfect for relaxing or entertaining. Upstairs, find three spacious bedrooms and a beautifully redone bathroom, accented with sleek finishes and gilded touches. Updates include all new flooring (vinyl, lino & carpet) and bathrooms. The large single attached garage fits two small cars for added convenience. Basement is fully finished, adding extra living space or rec room potential. Nestled in a great location, this home offers effortless style and function in every detail. Donâ€™t miss this sophisticated gemâ€”just move in and enjoy!

Built in 1975

## Essential Information

MLS® #	E4445319
Price	\$299,800
Bedrooms	4
Bathrooms	1.50
Full Baths	1
Half Baths	1
Square Footage	1,055
Acres	0.00



Year Built	1975
Type	Condo / Townhouse
Sub-Type	Townhouse
Style	2 Storey
Status	Active

### **Community Information**

Address	1096 Millbourne
Area	Edmonton
Subdivision	Michaels Park
City	Edmonton
County	ALBERTA
Province	AB
Postal Code	T6K 1W1

### **Amenities**

Amenities	On Street Parking, Hot Wtr Tank-Energy Star
Parking	Over Sized, Single Garage Attached

### **Interior**

Appliances	Dryer, Refrigerator, Stove-Electric, Washer
Heating	Forced Air-1, Natural Gas
Stories	3
Has Basement	Yes
Basement	Full, Finished

### **Exterior**

Exterior	Wood, Brick, Vinyl
Exterior Features	Fenced, Picnic Area, Playground Nearby, Public Swimming Pool, Public Transportation, Schools, Shopping Nearby
Roof	Asphalt Shingles
Construction	Wood, Brick, Vinyl
Foundation	Concrete Perimeter

### **Additional Information**

Date Listed	July 2nd, 2025
Days on Market	4
Zoning	Zone 29
Condo Fee	\$383

DATA IS DEEMED RELIABLE BUT IS NOT GUARANTEED ACCURATE BY THE REALTORS® ASSOCIATION OF EDMONTON. COPYRIGHT 2025 BY THE REALTORS® ASSOCIATION OF EDMONTON. ALL RIGHTS RESERVED.Trademarks are owned or controlled by the Canadian Real Estate Association (CREA) and identify real estate professionals who are members of CREA (REALTOR®, REALTORS®) and/or the quality of services they provide (MLS®, Multiple Listing Service®)

Listing information last updated on July 6th, 2025 at 4:47pm MDT