

\$399,950 - 6863 Cardinal Link Link, Edmonton

MLS® #E4453274

\$399,950

3 Bedroom, 2.50 Bathroom, 1,313 sqft

Single Family on 0.00 Acres

Chappelle Area, Edmonton, AB

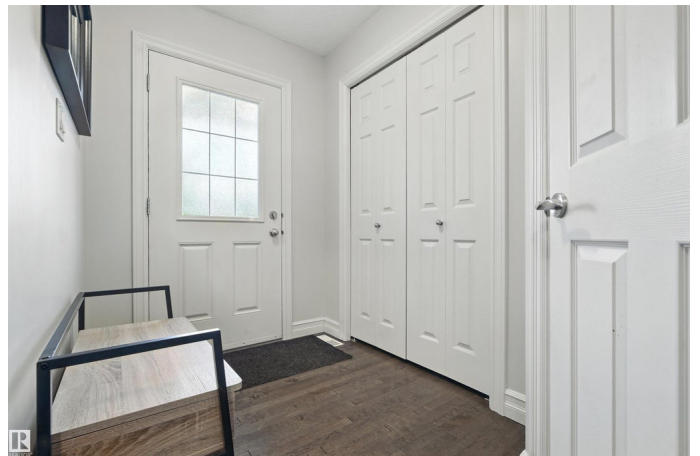
Welcome to Chappelle! This 2014 built half-duplex home is a perfect start for a young family. Over 1800 ft² of living space, and plenty of room to grow. Inviting foyer, double closets and 2pce guest bathroom. Hardwood floors in the open concept main floor. Espresso kitchen cabinets, walk-in pantry, granite countertops on working island, countersunk double sink and goose neck faucet. Dining nook can easily fit a family table, patio doors to BBQ deck and fully-fenced backyard. Livingroom offers plenty of space for sectional furniture. Upper level has two spacious kids bedrooms, full bathroom, Master suite with walk-in closet and double shower in ensuite. Recently installed vinyl flooring in developed basement family room, generous space to enjoy the hockey games, movie nights or quiet evenings at home. Modern Energy Efficient home, On-demand hot water system, High efficiency furnace and Heat recovery Unit, will keep the utility bills low. Great location, walk to shopping center, park playground

Built in 2013

Essential Information

MLS® # E4453274

Price \$399,950



Bedrooms	3
Bathrooms	2.50
Full Baths	2
Half Baths	1
Square Footage	1,313
Acres	0.00
Year Built	2013
Type	Single Family
Sub-Type	Half Duplex
Style	2 Storey
Status	Active

Community Information

Address	6863 Cardinal Link Link
Area	Edmonton
Subdivision	Chappelle Area
City	Edmonton
County	ALBERTA
Province	AB
Postal Code	T6W 1Z1

Amenities

Amenities	On Street Parking, Deck, Hot Water Instant, No Animal Home, No Smoking Home, Vinyl Windows
Parking Spaces	2
Parking	Insulated, Single Garage Attached

Interior

Interior Features	ensuite bathroom
Appliances	Dishwasher-Built-In, Dryer, Garage Opener, Microwave Hood Fan, Refrigerator, Stove-Electric, Washer, Window Coverings
Heating	Forced Air-1, Natural Gas
Stories	3
Has Basement	Yes
Basement	Full, Finished

Exterior

Exterior	Wood, Stone, Vinyl
Exterior Features	Back Lane, Fenced, Flat Site, Landscaped, Park/Reserve, Playground

	Nearby, Public Transportation, Shopping Nearby
Roof	Asphalt Shingles
Construction	Wood, Stone, Vinyl
Foundation	Concrete Perimeter

Additional Information

Date Listed	August 15th, 2025
Days on Market	1
Zoning	Zone 55
HOA Fees	100
HOA Fees Freq.	Monthly

DATA IS DEEMED RELIABLE BUT IS NOT GUARANTEED ACCURATE BY THE REALTORS® ASSOCIATION OF EDMONTON. COPYRIGHT 2025 BY THE REALTORS® ASSOCIATION OF EDMONTON. ALL RIGHTS RESERVED. Trademarks are owned or controlled by the Canadian Real Estate Association (CREA) and identify real estate professionals who are members of CREA (REALTOR®, REALTORS®) and/or the quality of services they provide (MLS®, Multiple Listing Service®)

Listing information last updated on August 16th, 2025 at 3:02pm MDT